

PromedeusLab



REVOLUTIONIZING FUNCTIONAL BRAIN IMAGING

NeuroLF[®]





Schweizerische Eidgenossenschaft
Confédération suisse
Confederazione Svizzera
Confederaziun svizra
Swiss Confederation
Innosuisse – Swiss Innovation Agency



Co-funded by the Horizon 2020 programme
of the European Union

Spinoff

ETH zürich

POSITRIGO Facts

- Founded in 2018 by two physicists (Dr. Jannis Fischer, CEO and Dr. Max Ahnen, COO)
- ETH ZurichSpin Off
- Award-winning company (Innosuisse R&D grant, Venture Leader, EIC Accelerator)
- Successful funding rounds
- First product is a brain PET device called NeuroLF[®]
- CE-mark and FDA clearance expected for beginning of 2024



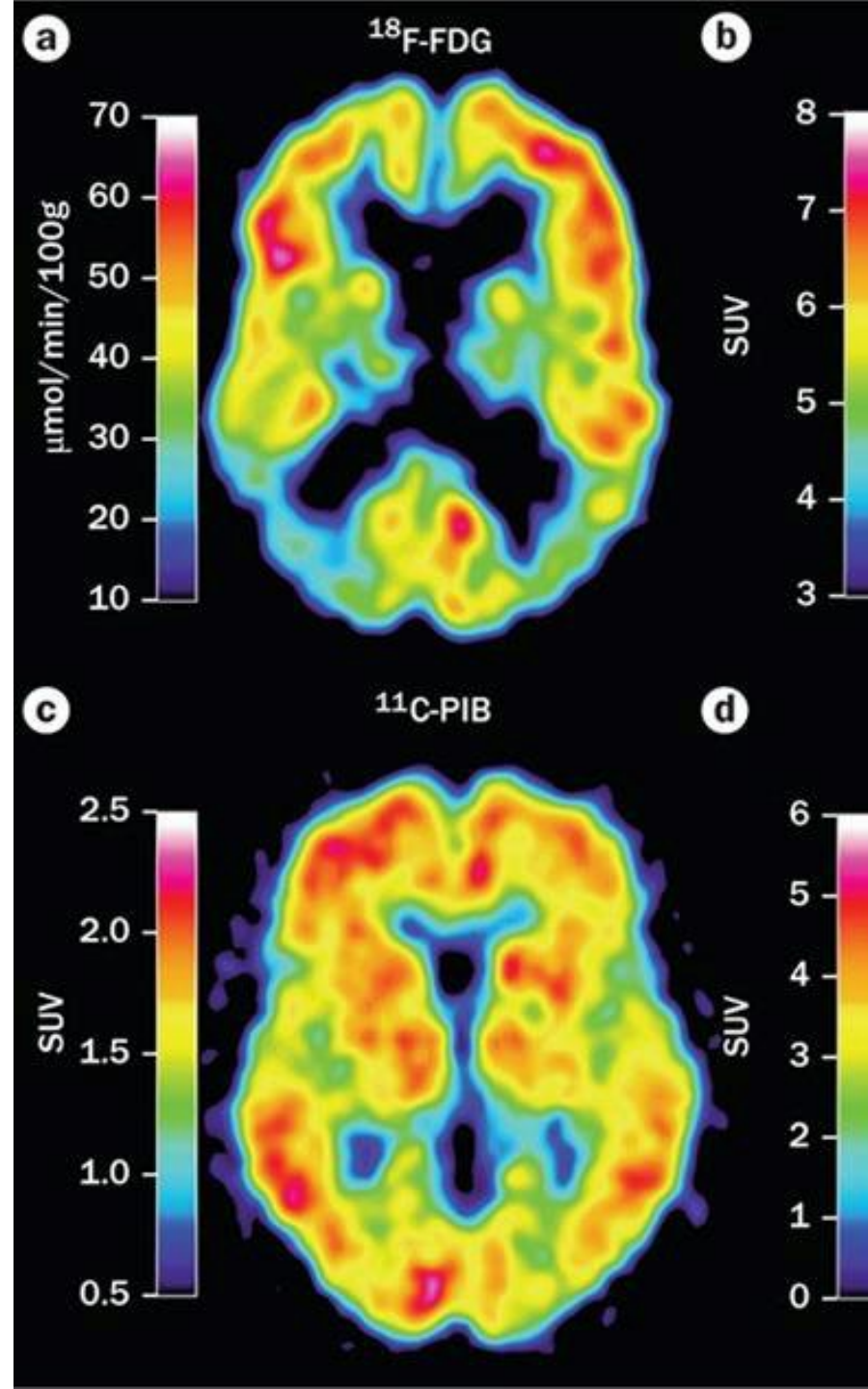
Headquarter in Technopark Zürich, Switzerland

The Problem

Positron Emission Tomography (PET) is a functional imaging method, which is significantly more sensitive than fMRI and thus extremely valuable in diagnosing diseases like [Alzheimer's](#), [Parkinsons](#), [Primary Brain Tumors](#), [Traumatic Brain Injury](#), and [Ischemic Stroke](#).

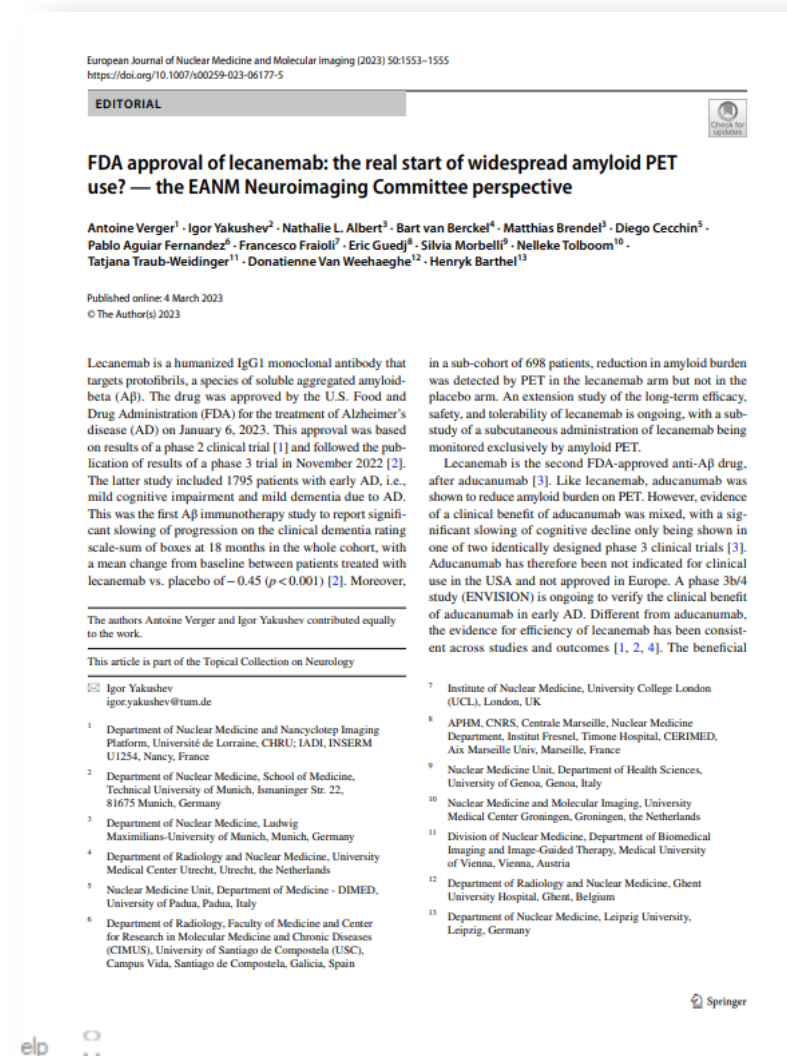
Current solutions are inefficient because they are:

- Costly (EUR 2 to 10M)
- Large and heavy (need construction for room)
- Complex to use (multi-operator)
- Overused (long waiting time to access)



The Unmet Need

- The EANM Neuroimaging Committee believes that amyloid PET is at a historical turning point, where it has paved the way for early AD diagnosis and now may also have therapeutic implications.
- In a recent editorial it was noted that approval of disease-modifying treatments for (AD) could increase the need for amyloid PET by a factor of 20.



Verger et al., 2023

Meet NeuroLF[®]

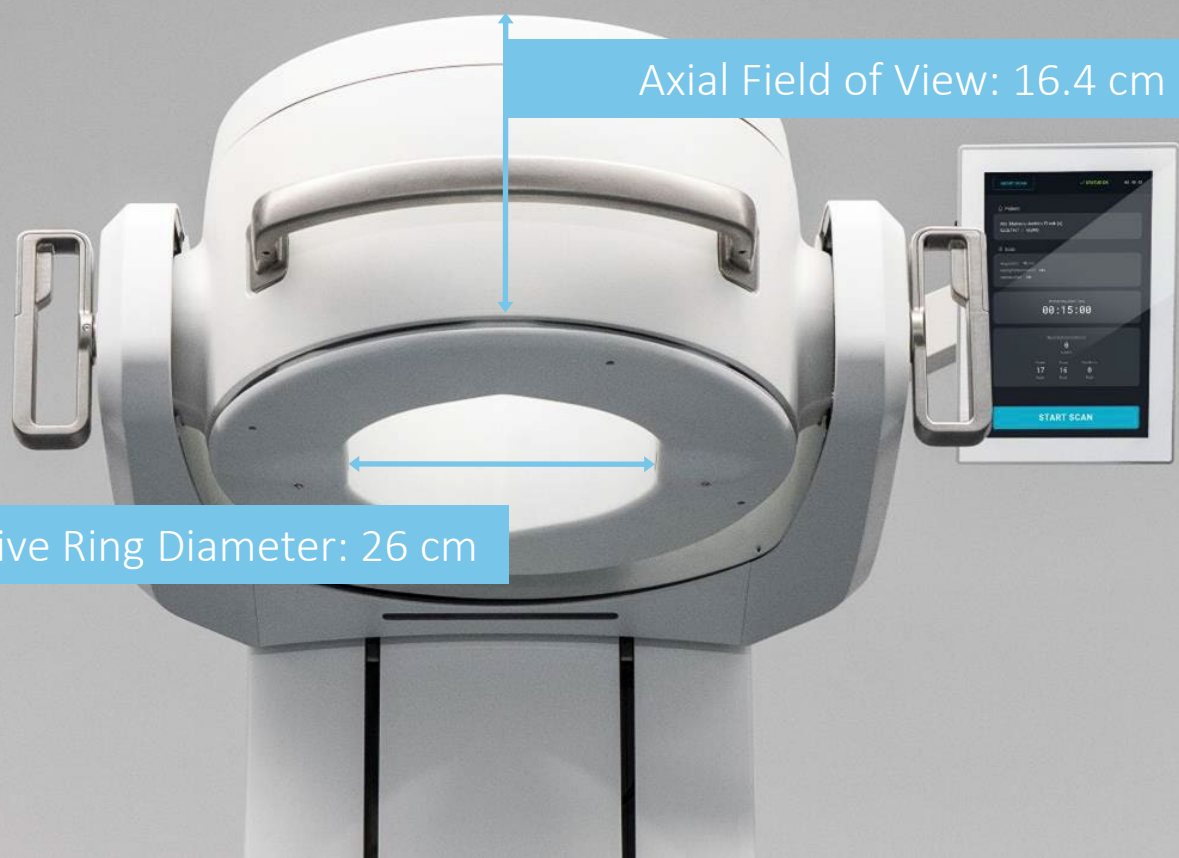
- NeuroLF[®] is a brain PET scanner specifically designed for the diagnosis of brain related disorders
- Ultra-compact design
- Attractive price value proposition
- High patient comfort
- Intuitive Usability



Scan QR-code
to watch
NeuroLF[®] video



Ultra-Compact



NeuroLF[®] Benefits

Benefits for Clinicians

- Lower investment cost
- Small footprint
- Intuitive Usability
- Dedicated brain PET including sophisticated imaging reconstruction
- Easier patient handling resulting in increased throughput



NeuroLF[®] Benefits

Benefits for Patients

- Cost efficient access to dedicated brain related disease diagnosis
- Fast intervention
- Comfortable procedure
- Allows for differential diagnosis and therefore more specific information for patients



For whom is NeuroLF®

“For centers with an increasing need to efficiently diagnose brain disorders, NeuroLF® offers state-of-the-art functional brain imaging at a fraction of today’s overall cost.”

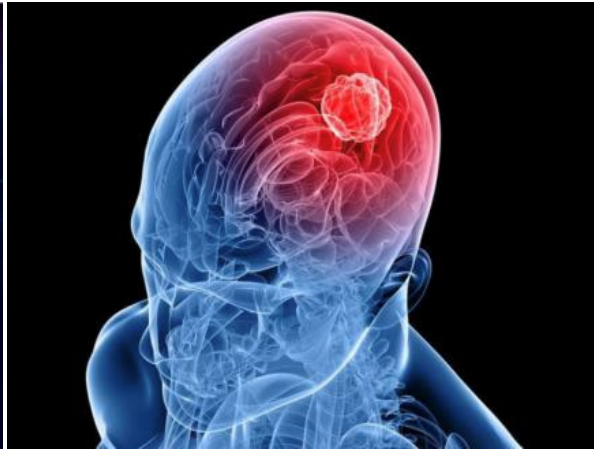


Prof. em. Alfred Buck
Former Director of NeuroPET Program
at University Hospital of Zurich, Switzerland

NeuroLF[®] Applications



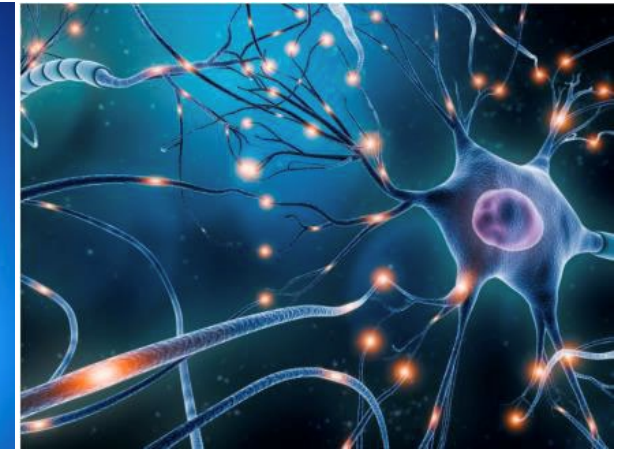
Dementia
Alzheimer's disease



Neuro-Oncology
Gliomas



Epilepsy



Movement Disorders
Parkinson's disease

Positrigo Management & Board



Dr. Jannis Fischer
CEO & Co-Founder
Alumni of ETH Zurich, FU & HU Berlin, and UCLA.
8+ years experience in PET system development.
Forbes 30 under 30 listed.



Dr. Max Ahnen
COO & Co-Founder & Board Member
Alumni of ETH Zurich, FU & HU Berlin, and UCLA.
8+ years experience in detector development.
Forbes 30 under30 listed.



Dr. Stefan Bircher
Chief Commercial Officer
20+ years' experience in robotics and health care technologies in the areas of product management, general management and sales & marketing with focus of go-to-market activities for international operations.



Dr. Ilaria Sacco
Chief Technology Officer
Decade of experience in designing electronics hardware and sensors readout circuits for medical imaging instrumentation, robotics surgical devices and particle detectors.



Urs Suter, Chairman of the Board
Former CEO and chairman of the board of directors at Siemens Healthcare AG and Healthcare Diagnostics GmbH.



Prof. em. Dr. Alfred Buck, Board Member
Co-Founder of Swisstrace and former Professor and Head of NeuroPET at the University Hospital Zurich. Buck helps the team build a device from clinicians, for clinicians.



Dr. Jean-Pierre Rosat, Board Member
Serial entrepreneur, PhD in Immunology, Post-doc at Harvard Medical School. long experience in entrepreneurship (co-founded and managed over 12 Swiss start-ups).
General partner and Founder at 4FO Venture Partners.



Alexander Vamvakas, Board Member
Alex is involved in private equity and venture capital investments at Fairway Asset Management AG. He is passionate about technology and innovation, and he holds a diploma from the National Technical University of Athens and an MSc from Imperial College London.

 PromedeusLab

Thank you!

info@promedeuslab.cz
promedeuslab.cz