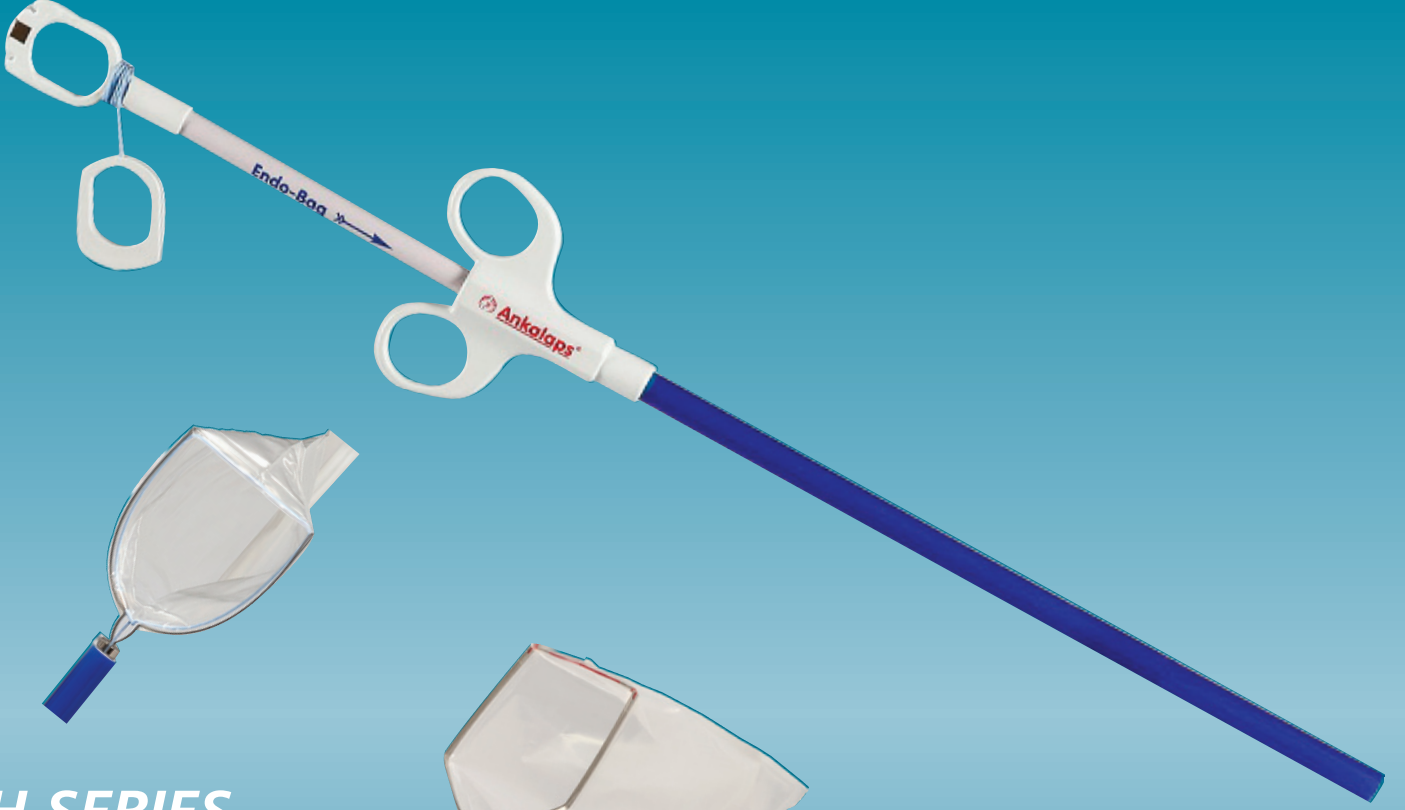




Tissue and Organ Retrieval Bags



H SERIES

HW SERIES

W SERIES

*Safe, Fast and Easy to Use for laparoscopic
operations with three different models
and large dimension alternatives*



Anka Sağlık Gereçleri San. İç ve Dış Tic. Ltd. Şti
www.ankasaglik.com

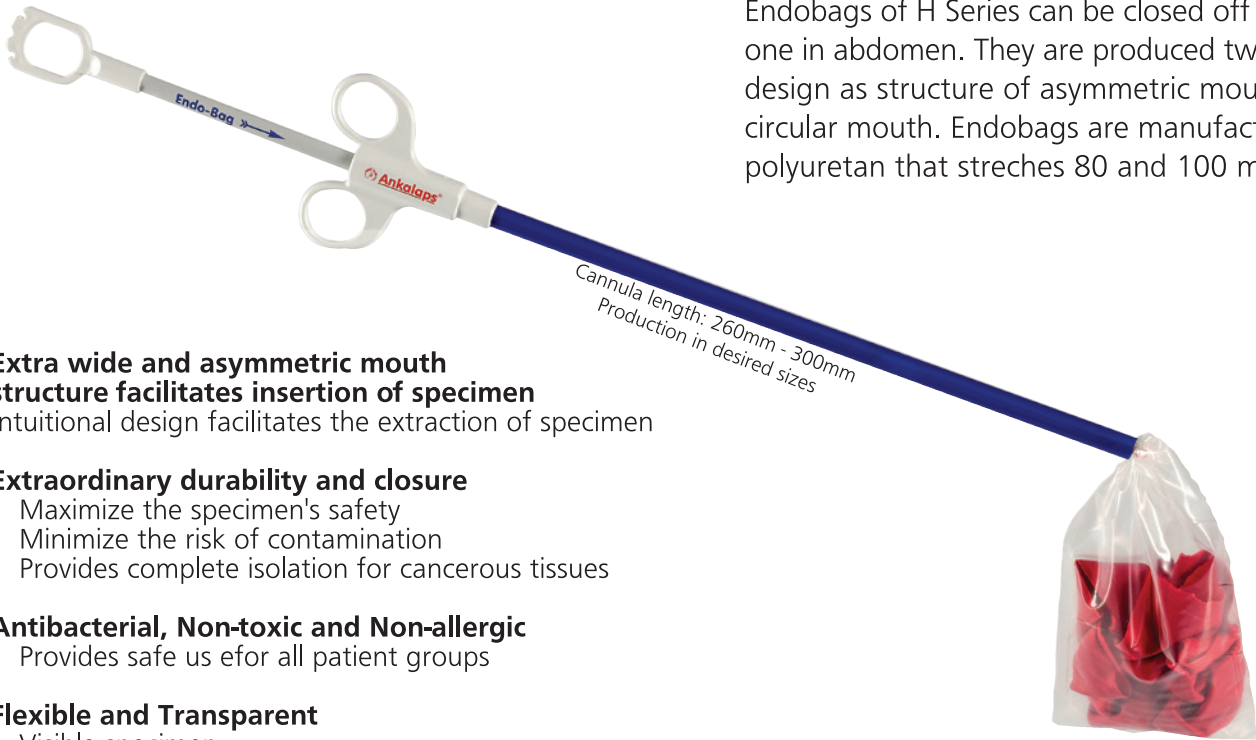
H SERIES

TISSUE AND ORGAN RETRIEVAL BAGS



Ankalaps®

Endobags of H Series can be closed off more than one in abdomen. They are produced two different design as structure of asymmetric mouth and circular mouth. Endobags are manufactured from polyuretan that stretches 80 and 100 micron.



- ✓ **Extra wide and asymmetric mouth structure facilitates insertion of specimen**
Intuitional design facilitates the extraction of specimen
- ✓ **Extraordinary durability and closure**
Maximize the specimen's safety
Minimize the risk of contamination
Provides complete isolation for cancerous tissues
- ✓ **Antibacterial, Non-toxic and Non-allergic**
Provides safe us efor all patient groups
- ✓ **Flexible and Transparent**
Visible specimen



introducer with double handle



opening direction indicator (intra - abdominal)



asymmetric mouth design



circular mouth design



opening direction indicator (push handle)

REFERANCE	SIZE	DIMENSIONS	IN A BOX	VOLUME
XS05H	X-SMALL	50mm x 100mm	12 PCS	100ml
S10H	SMALL	65mm x 150mm	12 PCS	200ml
M10H	MEDIUM	75mm x 200mm	12 PCS	400ml
L10H	LARGE 10	100mm x 200mm	12 PCS	800ml
L12H	LARGE12	125mm x 230mm	12 PCS	1500ml
XL15H	X-LARGE	130mm x 250mm	12 PCS	2000ml
XXL15H	XX-LARGE	150mm x 250mm	12 PCS	2500ml

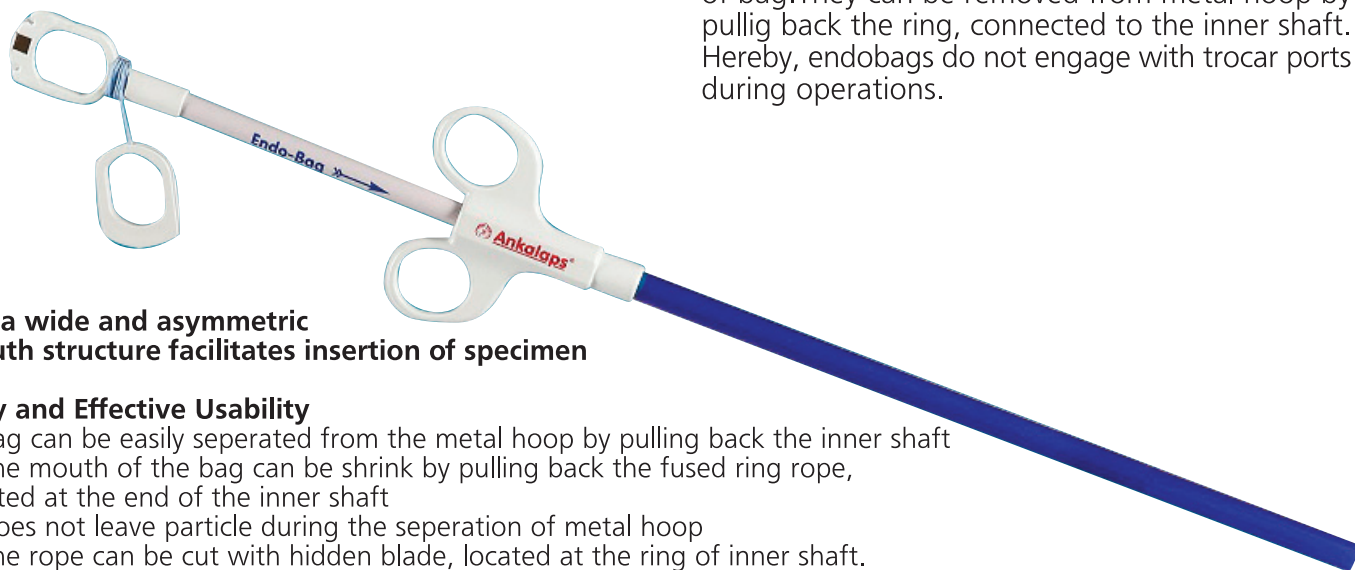


HW SERIES

TISSUE AND ORGAN RETRIEVAL BAGS



Endobags of HW Series open automatically by aid of shape memory metal strip, located at the mouth of bag. They can be removed from metal hoop by pulling back the ring, connected to the inner shaft. Hereby, endobags do not engage with trocar ports during operations.



- ✓ **Extra wide and asymmetric mouth structure facilitates insertion of specimen**
- ✓ **Easy and Effective Usability**
 - Bag can be easily separated from the metal hoop by pulling back the inner shaft
 - The mouth of the bag can be shrink by pulling back the fused ring rope, located at the end of the inner shaft
 - Does not leave particle during the separation of metal hoop
 - The rope can be cut with hidden blade, located at the ring of inner shaft.
 - Allows the use of other tools without blocking the trocar
- ✓ **Extraordinary Durability and Transparent Bag Structure**
 - Protects both surgeon and patient from invasive reaction taken from specimens
 - Prevents the risk of transmission of malignant cells
 - Large specimens can be cut into small pieces



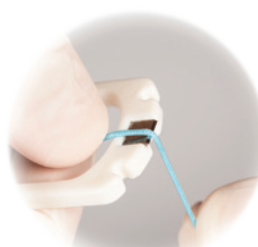
asymmetric design



seperable shrinking ring



introducer with double handle



hidden blade



opening direction indicator

REFERANCE	SIZE	DIMENSIONS	IN A BOX	VOLUME
XS05HW	X-SMALL	50mm x 100mm	12 PCS	100ml
S10HW	SMALL	65mm x 150mm	12 PCS	200ml
M10HW	MEDIUM	75mm x 200mm	12 PCS	400ml
L10HW	LARGE 10	100mm x 200mm	12 PCS	800ml
L12HW	LARGE12	125mm x 230mm	12 PCS	1500ml
XL15HW	X-LARGE	130mm x 250mm	12 PCS	2000ml
XXL15HW	XX-LARGE	150mm x 250mm	12 PCS	2500ml



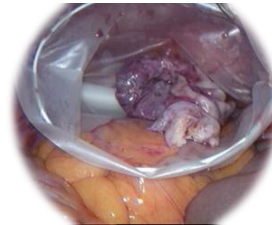
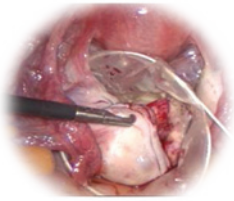
W SERIES

TISSUE AND ORGAN RETRIEVAL BAGS



Endobags of W Series are design for simple, memory and safe minimally surgical.

- ✓ Protects both surgeon and patient from invasive reaction taken from specimen
- ✓ Through chrome-nikel multifilament, located at the mouth of bag, endobag is opened automatically and ready to use. After putting the specimen, the mouth of the bag closed easily with the help of a holder
- ✓ Can be opened and closed many times
- ✓ Allows the use of other tools without blocking trocar
- ✓ Large specimens can be cut into smaller pieces inside the endobag. Prevents the spreading risk of malignant cells. Produced from transparent, strong, non-allergic antibacterial polyuretan film. Available for use inside the protective cannula



REFERANCE	SIZE	DIMENSIONS	IN A BOX	VOLUME
XS05W	X-SMALL	50mm x 100mm	12 PCS	100ml
S10W	SMALL	65mm x 150mm	12 PCS	200ml
M10W	MEDIUM	75mm x 200mm	12 PCS	400ml
L10W	LARGE 10	100mm x 200mm	12 PCS	800ml
L12W	LARGE12	125mm x 230mm	12 PCS	1500ml
XL15W	X-LARGE	130mm x 250mm	12 PCS	2000ml
XXL15W	XX-LARGE	150mm x 250mm	12 PCS	2500ml



Anka Sağlık Gereçleri San. İç ve Dış Tic. Ltd. Şti
Örnek Mah. Şehit Cahar Dudayev Cad. Yarış Plaza No:15/7-9 Ataşehir / İstanbul / TÜRKİYE
Tel: +90 216 315 04 77 Fax : +90 216 315 04 78