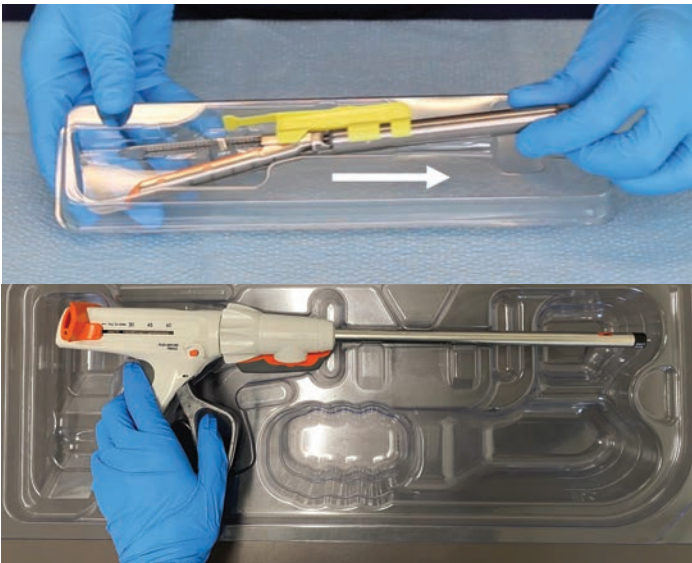
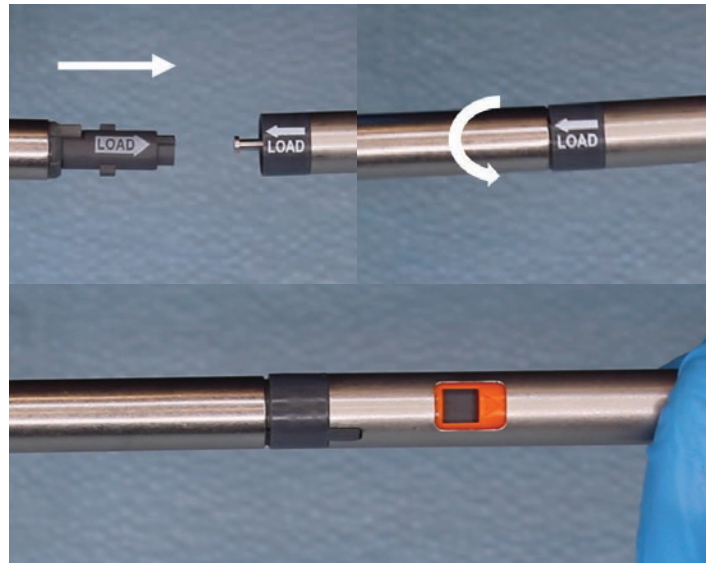


IN-SERVICE GUIDE

UNPACKAGING



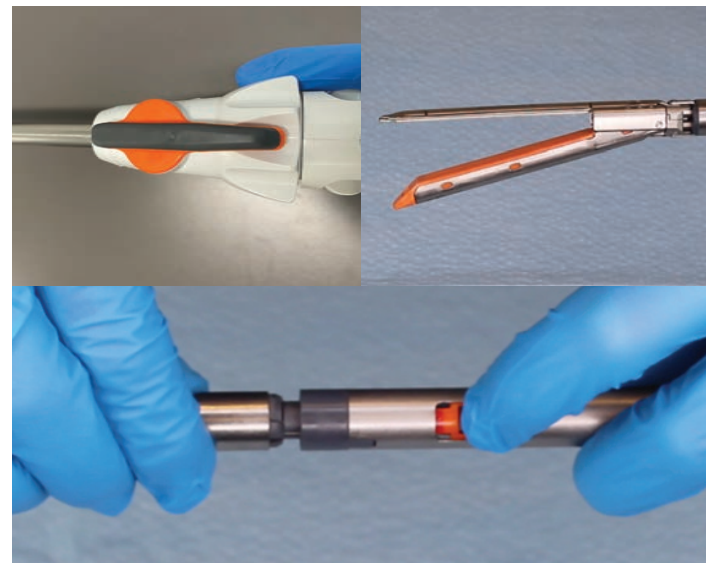
LOADING



SYSTEM CHECK



UNLOADING



AEON™

UNPACKAGING

For unpackaging the reload, make sure to slide the reload out to the side. It is much more difficult to remove the reload by pulling straight up.

For unpackaging the handle, peel the Tyvek lid off the tray using the triangle open flap. Now you can hold the handle using any of the groove spaces and simply pop it out.

LOADING

Place the back end of the handle on the table top, with the shaft pointed upwards.

Once the arrows are aligned, push down until fully seated. Once it's fully pushed down, rotate clockwise to lock. You should hear a nice click.

Visible red marking on the orange unload button indicates improper loading. If you see any red marking, remove the reload and try loading again.

SYSTEM CHECK

It's very important to clamp and unclamp one cycle to confirm proper loading before handing the stapler off to the surgeon.

Clamp by squeezing the firing trigger, and unclamp by pushing the trigger or pulling the retraction knobs.

UNLOADING

Ensure the articulation knob is centered and the reload jaws are unclamped prior to unloading. Otherwise, you won't be able to unload the reload.

While holding down the orange unload button, rotate fully counter-clockwise to release the reload. You should be able to remove the reload with very little force.