

AEON™

ENDOSTAPLER

INNOVATING
MINIMALLY INVASIVE
SURGERY WITH
S3 ENGINEERING™



LEXINGTON
MEDICAL



AEON WITH S3 ENGINEERING™

Superior staple lines. Smooth articulation. Multi-speed gear.

Advanced reload architecture

Integrated I-beam assembly, fixed anvil and teardrop shape anvil buckets

High tech manufacturing

Proprietary manufacturing equipment incorporating AI

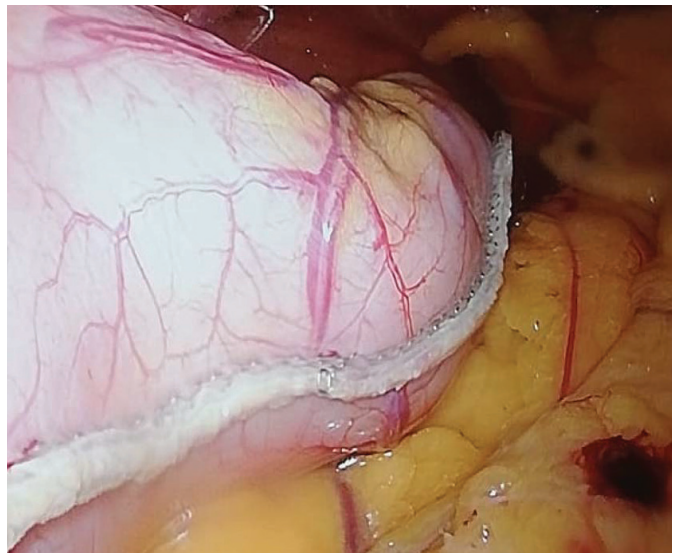
Cross compatibility

Cross compatible with Endo GIA™ and Signia™ powered handles



BETTER STAPLE FORMATION IN THICK TISSUE¹

AEON™ staple lines from a laparoscopic sleeve gastrectomy procedure



SMOOTH RANGE OF MOTION WITH PRECISE ARTICULATION



Precise articulation

Freedom to articulate effortlessly
for a more controlled firing



Multi-speed gear

Reduced trigger pull force
for thicker tissue

Single-handed grasper

Quick, easy tissue grasping
for increased efficiency



50%

LOWER FIRING FORCE WITH MULTI-SPEED GEAR¹

for controlled firing in thick tissue

1. Data on file

Cleveland Clinic
Use of Alternative, Cost-Effective Stapler Reload Cartridges in Bariatric Surgery
 Joshua J. Lammiman MD, Jon S. Frazee MD, Andrew T. Doran MD, Gary Rothman MD, Elizabeth L. Hirsch MD, Daniel Sussman MD, John Rodriguez MD
 Journal of Laparoendoscopic Surgery, Springer Science & Business Media, Cleveland Clinic, "Journal of Laparoendoscopic Surgery, Springer Science & Business Media, Cleveland Clinic, 2019"

Objective

- The United States Food & Drug Administration has approved the first new class of a compatible laparoscopic stapler under the FDA process as a substantially similar medical device.
- The approved stapler reload cartridges that are fully compatible with existing laparoscopic stapler handle systems and are available at a significantly less cost than traditional stapler reloads.
- You should evaluate the safety and efficacy of these alternative laparoscopic stapler cartridges for use in bariatric surgery.

Description

- Fifty consecutive primary laparoscopic Roux-en-Y gastric bypass (RYGB) or sleeve gastrectomy (SG) cases were performed by four surgeons at our high-volume bariatric center.
- All cases were performed using laparoscopic stapler reload cartridges from an alternative, cost-effective stapler system produced in the United States.
- All stapler reload cartridges were deployed using a powered stapler handle system from a traditional, brand name supplier.
- Procedure details including stapler usage data and postoperative outcomes were prospectively recorded.

Results

- Twenty-two cases of RYGB and twenty-eight cases of SG.
- No intraoperative complications.
- Mean operative times: 152 min (RYGB), 88 min (SG).
- A total of 316 stapler reload cartridges deployed.
- One stapler system (S-25) has a modification in the powered stapler handle system, with identical cartridge deployment using the handle with alternative stapler cartridges.
- Minor staple line bleeding was observed following three stapler deployments (2 SG), with subsequent hemostasis obtained by utilization of hemostatic clips (n=2) or cover-sowing of the staple line (n=1).
- One patient with postoperative hemorrhage unrelated to the stapler.

Re-load Characteristics

Color	Open Height	Closed Height	EA/BX
Gray	2.0mm	0.75mm	6
Gray Curved Tip	2.0mm	0.75mm	6
White	2.5mm	1.0mm	6
White Curved Tip	2.5mm	1.0mm	6
White	2.5mm	1.0mm	6
Orange	3.25mm	1.5mm	6
Orange Curved Tip	3.25mm	1.5mm	6
Orange	3.25mm	1.5mm	6
Purple	4.0mm	1.8mm	6
Purple Curved Tip	4.0mm	1.8mm	6
Purple	4.0mm	1.8mm	6
Black	5.0mm	2.2mm	6

Conclusions

- These alternative, FDA-approved laparoscopic stapler reload cartridges appear to be safe and effective for use in laparoscopic bariatric surgery.
- When deployed using an existing powered stapler system from a traditional name-brand stapler handle and stapler line bleeding events were rare.
- These stapler reload cartridges may have the potential to significantly decrease costs of laparoscopic bariatric surgery without increased risk of procedure-related complications.

Disclosures

- The authors received no compensation or incentives for taking for use of this alternative stapler product and do not own, control, or manage independent of the manufacturer for other stapler handles or cartridges.

Safe and effective as presented by Cleveland Clinic at SAGES 2019

- No intraoperative complications with 316 AEON™ reloads deployed
- Fifty consecutive patients
- Laparoscopic gastric bypass and sleeve gastrectomy surgeries

Reload Type	Cartridge Length	Product Code	Open Height	Closed Height	EA/BX
Gray	45mm	AESR45G	2.0mm	0.75mm	6
Gray Curved Tip	45mm	AESC45G	2.0mm	0.75mm	6
White	45mm	AESR45W	2.5mm	1.0mm	6
White Curved Tip	45mm	AESC45W	2.5mm	1.0mm	6
White	60mm	AESR60W	2.5mm	1.0mm	6
Orange	45mm	AESR45R	3.25mm	1.5mm	6
Orange Curved Tip	45mm	AESC45R	3.25mm	1.5mm	6
Orange	60mm	AESR60R	3.25mm	1.5mm	6
Purple	45mm	AESR45P	4.0mm	1.8mm	6
Purple Curved Tip	45mm	AESC45P	4.0mm	1.8mm	6
Purple	60mm	AESR60P	4.0mm	1.8mm	6
Black	60mm	AESR60B	5.0mm	2.2mm	6

Handle Type	Shaft Length	Product Code	EA/BX
Medium	160mm	AESH160	3
Long	260mm	AESH260	3

© 2020 Lexington Medical, Inc. The third-party trademarks used herein are trademarks of their respective owners. Always refer to the instructions for use for the most recent information. Document control MC-010920 Rev A.