

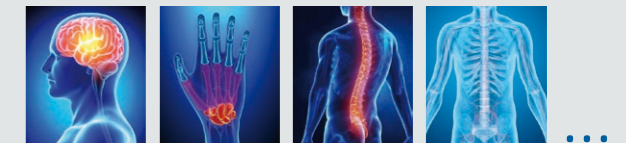
Flexible assistance system  
opens up new horizons

**ENDOFIX<sup>exo</sup>**  
Passive support arm  
Flexibility you need



Developed and manufactured by  
AKTORmed GmbH  
Borsigstrasse 13  
93092 Barbing, Germany  
Phone: +49 (0) 9401 9320-110  
Fax: +49 (0) 9401 9320-115  
E-Mail: [info@aktormed.com](mailto:info@aktormed.com)

AKTORmed and SOLOASSIST are registered  
trademarks of AKTORmed GmbH.



Distributed by:

## ENDOFIX<sup>exo</sup>

### Passive support arm for Endoscope positioning

- Progressive and sensitive adjustment at the push of a button
- A stable and wobble-free image enhances the quality of surgery.

### Stable OP field of vision

- The system provides surgeons with a stable and rock-steady OP field of vision, even in extreme endoscopic positions.
- The wide scope of movement provides surgeons with full visibility of the OP site - without any restrictions. There is no need to alter one's customary way of working.



### Safe and sterile procedures

- The stable image allows surgeons to work in a more relaxed manner, maintaining a reliable view of essentials.
- Even extreme camera positions can be maintained for as long as required, which is a considerable advantage over manual camera control.
- The front support arm is also autoclavable. The device as such is covered by a sterile single-use drape.

### Dynamic manual positioning

- At the push of a button, the arm can be moved and pulled into the required position. When the button is released, the arm is locked immediately, remaining in the set position.
- The unlocking button is located on the distal end of the arm in an easily accessible position.



### Straightforward docking

- Docking the system to the operating table is very simple thanks to the quick-coupling device. If conversion is required, the support arm can be uncoupled from the operating table in just a few seconds.
- After the procedure, the arm is simply hung onto the trolley. The trolley is fully mobile and is used for storing the ENDOFIX<sup>exo</sup>.

## FIELDS OF APPLICATION

FIELDS OF APPLICATION

### ENT Surgery



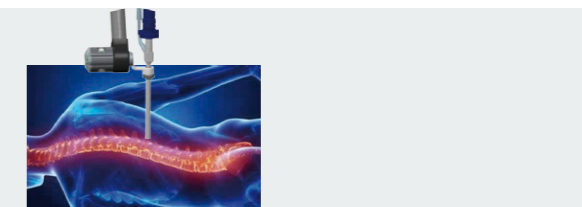
### Neurosurgery



### Hand Surgery



### Spinal surgery



### Thoracic surgery

